

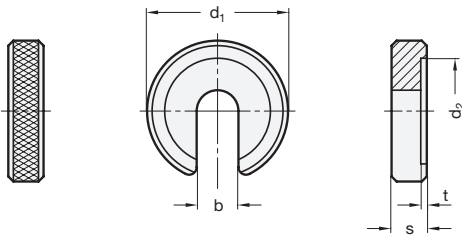
C-Washers

SPECIFICATION

Steel
 - Case hardened
 - blackened

INFORMATION

C-Washers GN 183 maybe installed without the removal of the nut from the stud.
 In terms of dimensions they are almost identical to DIN 6372 C-Washers.



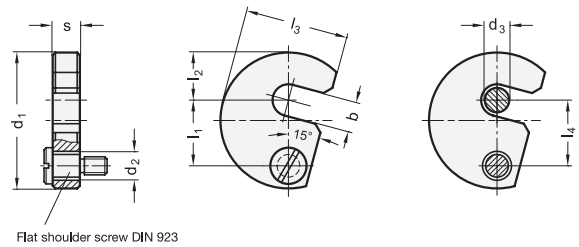
Captive C-Washers

SPECIFICATION

Steel
 - tempered
 - blackened
 Flat shoulder screw DIN 923
 blackened

INFORMATION

Captive C-Washers DIN 6371 transfer the clamping force of screw or nut to the workpiece. After releasing the thread they can be swung away from the clamping point. They are hinged and thus can never be mislaid.
 Flat shoulder screws DIN 923 are included.



Flat shoulder screw DIN 923

GN 183

Description	d1	b	d2	s	t	For threaded bolt	
GN 183-22-6,2	22	6.2	16	6	0.8	M 6	13
GN 183-28-8,3	28	8.3	21	7	1	M 8	23
GN 183-34-10,4	34	10.4	25	8	1.2	M 10	38
GN 183-40-12,5	40	12.5	30	9	1.8	M 12	57
GN 183-56-16,5	56	16.5	37	12	1.8	M 16	161

DIN 6371

Description	d1	b	d2	d3	l1	l2	l3	l4	s -0.5	Screw DIN 923	
DIN 6371-38-7,5	38	7.5	9	6	19.6	11	29	19	9.8	M 6 x 10	64
DIN 6371-43-9,5	43	9.5	9	8	21.6	14	32.5	21	9.8	M 6 x 10	80
DIN 6371-48-11,5	48	11.5	9	10	23.6	17	36.5	23	9.8	M 6 x 10	99
DIN 6371-61-13,5	61	13.5	11	12	29.6	22	45	29	11.8	M 8 x 12	189
DIN 6371-68-17,5	68	17.5	11	16	33.6	25	50	33	11.8	M 8 x 12	226
DIN 6371-74-21,5	74	21.5	11	20	36.6	28	55	36	11.8	M 8 x 12	262
DIN 6371-82-25,5	82	25.5	11	24	40.6	32	62	40	15.8	M 8 x 16	423
DIN 6371-97-32	97	32	11	30	49	39	73	48	15.8	M 8 x 16	560